



£220,000

3 Bedroom Semi-Detached House for sale

41 ARDEN ROAD, BARTON UNDER NEEDWOOD, BURTON-ON-TRENT



EweMove
SALES AND LETTINGS



Overview

With a spacious south-facing garden, a generous living area, and excellent local amenities, this property is ideal for families, or anyone looking to enjoy village life. ENQUIRE VIA OUR EWEMOVE WEBSITE TO ARRANGE A VIEWING.



Key Features

- South Facing Garden
- Driveway & Garage
- Close to Excellent Local Amenities
- Sought After Village Location
- John Taylor Catchment
- Call NOW 24/7 or book instantly online to View
- CHAIN FREE





CHAIN FREE - With a spacious south-facing garden, a generous living area, and excellent local amenities, this property is ideal for families, or anyone looking to enjoy village life.

Step inside, and you'll find a well-appointed kitchen with fitted units and a handy utility area. The open-plan living and dining space at the rear of the home provides a wonderful place to relax, featuring sliding doors that flood the room with natural light and offer seamless access to the sun-drenched garden - perfect for summer entertaining or unwinding after a long day.

Upstairs, two spacious double bedrooms and a comfortable single offer flexible living arrangements, all served by a well-equipped family shower room.

Outside, the private driveway provides ample off-street parking, and a shared side driveway leads to a single garage-ideal for extra storage or workshop space. The enclosed rear garden, framed by mature trees and shrubs, offers a peaceful retreat to enjoy year-round.

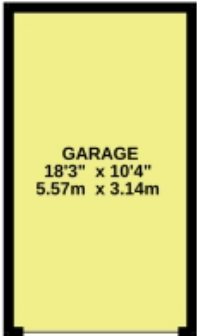


Barton-Under-Needwood boasts a thriving village atmosphere with a fantastic selection of local shops, charming cafes, traditional pubs, and boutique stores. Just a short stroll away is Barton Marina, where you can take in the stunning waterfront, enjoy scenic walks, or dine at one of the many popular eateries. Plus, with excellent transport links via the A38, you'll have easy access to Lichfield, Burton-on-Trent, Derby, and Birmingham.

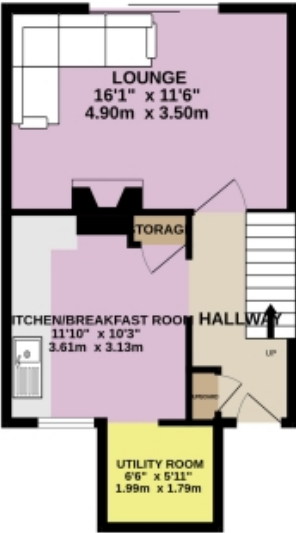
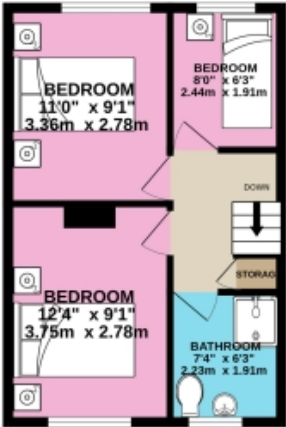
Don't miss out on this fantastic opportunity-book your viewing today via our EweMove website or call us 24/7!

Floorplans

GROUND FLOOR



1ST FLOOR



While every attempt has been made to ensure the accuracy of the floorplan contained here, measurements of doors, windows, rooms and any other items are approximate and no responsibility is taken for any error, omission or mis-statement. This plan is for illustrative purposes only and should be used as such by any prospective purchaser. The services, systems and appliances shown have not been tested and no guarantee as to their operability or efficiency can be given.
Made with Metrcio ©2025

EPC

The EPC will be available within 28 days or the property may be exempt, please speak to us for more details.



Marketed by EweMove Barton-under-Needwood

01283 247076 (24/7)
barton@ewemove.com

